



Front

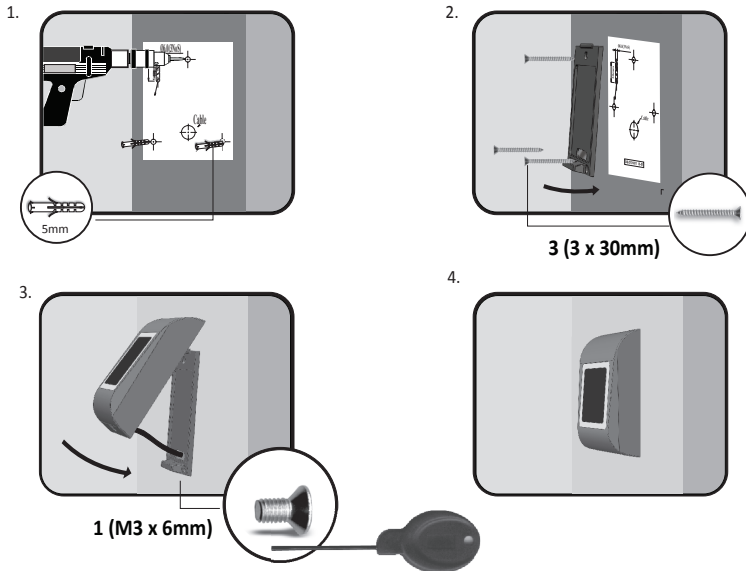


Side

SPECIFICATIONS

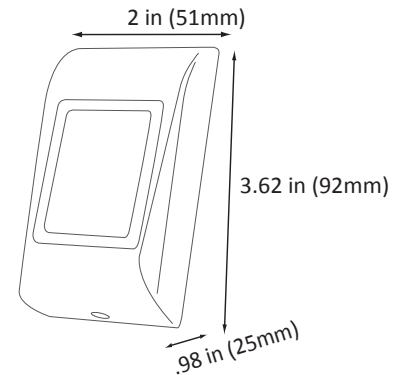
Input Voltage:	12-24 VDC; 15-24 VAC
Current Consumption:	max. 80mA
Relay Output:	2A at 24V DC / 120V AC
Green LED:	Relay operation
Red LED:	Normal
Operating Temperature:	-4° to 122°F (-20° to 50°C)
Operating Humidity:	Non-condensing up to 95%
Dimensions:	3.62L x 2W x .98H in. (92L x 51W x 25H mm)
Housing:	Moulded Aluminum
Touch Plate:	Mild Steel Painted
Indoor/Outdoor:	Indoor and Outdoor Use
Compliance:	This product complies with FCC Part 15 and UL 294
Cable Distance:	9.84 ft. (3 m)
Color:	Charcoal
Levels of Access Control:	Destructive attack: Level I Line security: Level I Endurance: Level IV Standby power: Level I

MOUNTING THE HARDWARE

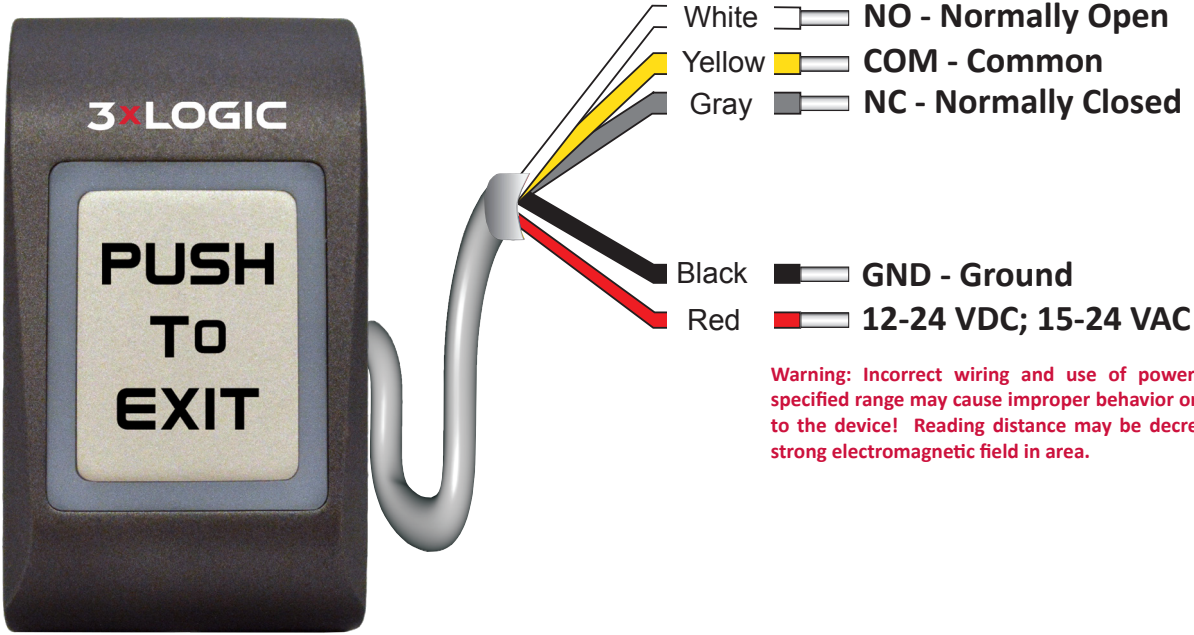


Note: Several layers of protection are provided against transient voltages from static discharge, lightning and power supply spikes. For protection to be fully effective, earth grounding should be done correctly.

Note: The lead shall not be spliced to a conductor larger than 18 AWG (0.82 mm²).

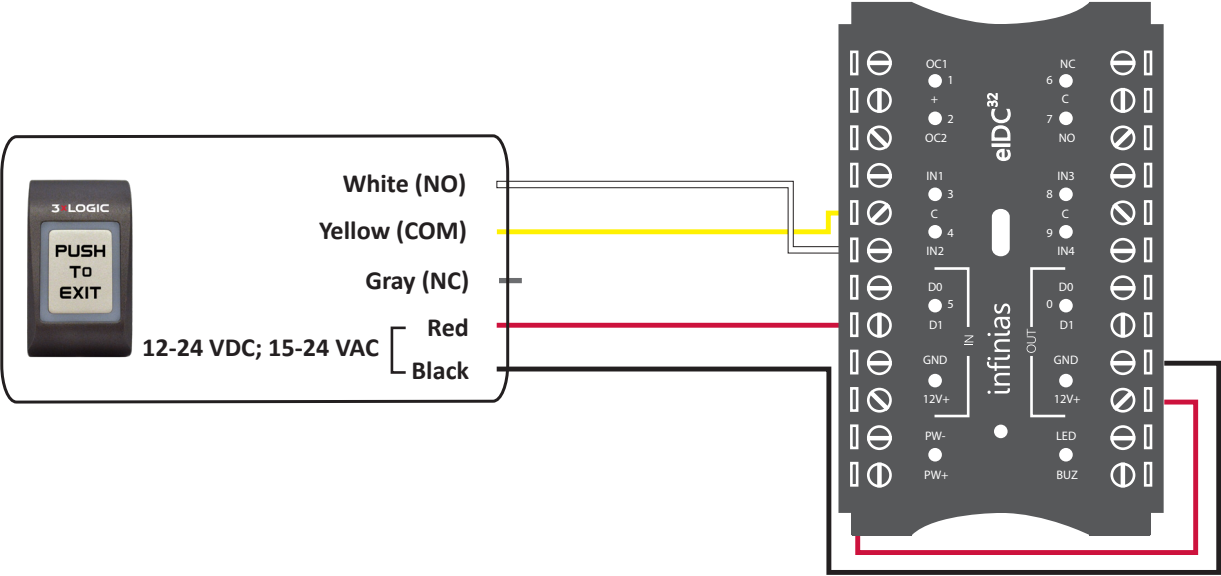


WIRING DIAGRAM







Warning: Incorrect wiring and use of power supply out of the specified range may cause improper behavior or permanent damage to the device! Reading distance may be decreased in presence of strong electromagnetic field in area.

WIRING THE eIDC³²



OPERATION

The table below illustrates the DIP switch settings in different modes

Operation	Switch 1	Switch 2	Switch 3 (Backlight)	Switch 4 (Green LED)	DIP Switch
Latch Mode	ON	ON	ON	ON	
10 Seconds	ON	OFF	ON	ON	
5 Seconds	OFF	ON	ON	ON	
3 Seconds	OFF	OFF	ON	ON	

Note: R-MEXIT-CHAR operates in Latch and Pulse mode. The time is set by DIP Switch setting.

Note: Set the operating time only before switching on power to the R-MEXIT-CHAR. If the operating time is to be changed, select a new time setting and then wait a few seconds for the circuit to re-adjust before switching back the power.

Note: DIP switches work as described; there is no tamper.

TESTING AND MAINTENANCE

Touch the front panel and hear if the relay is activated or measure the relay if the contact switches.

No special maintenance needed.