

VISIX™ 3MP High-Definition IP Vandal-Dome Camera w/IR

This three (3) megapixel IP Wide Dynamic Range (WDR) indoor dome camera from 3xLOGIC was engineered to provide high-definition video in changing or challenging lighting conditions, including bright backlit situations. The camera provides dual-streaming high-definition video at a full 2048 x 1536 pixels for video surveillance applications requiring superior clarity and image detail.

The VX-3M-D2-RIAWD is packed with all the features you might need for nearly any application including: full two-way audio, alarm input/output, SD card slot for local recording, motion detection, 120dB Wide Dynamic Range, remote focus, low-light/no-light, day/night functionality, and compatibility with a wide variety of standardized network protocols.

This aesthetically-pleasing vandal-proof dome camera allows unobtrusive and easy installation in a wide variety of areas. In addition, this camera is designed to continue functioning at top performance at temperatures as low as -30°C (-22°F) and as high as 60°C (140°F) allowing a wide range of applications.

Comes standard with a 2.8-12mm varifocal lens providing support for most applications. Wide Dynamic Range and progressive scan image sensor delivers excellent image quality in challenging and ever changing lighting conditions.

Dual-streaming compression permits recording at the highest quality while allowing fast live viewing from anywhere in the world regardless of available bandwidth. In addition, with full support for both variable bit rate and variable frame rate, the quality of each stream can be matched to available bandwidth for the most effective video quality possible.

When coupled with the VIGIL Series of digital video recorders and Video Management System (VMS) software from 3xLOGIC, superior point-to-point hardware compression and decompression allows for maximum performance of streamed live video providing better video quality, more concurrent streams and a lower overall hit to CPU performance.

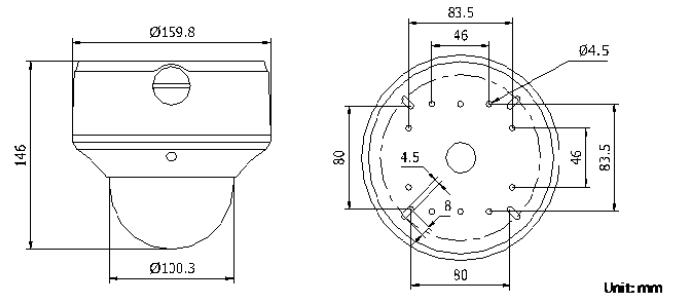


Key Features and Benefits	
Lens	2.8 - 12mm Varifocal Lens
Resolution (Megapixels)	3
H.264/MPEG4/MJPEG	✓
2-Way Audio	+
Remote Focus	✓
Infrared (Low-Light/No-Light)	✓
Wide Dynamic Range	✓
IK10 Impact-Resistant (Vandal-Proof Camera)	✓
PoE (802.3 af)	✓

+ Optional Kit

CAMERA

Image Sensor:	1/3 inch Progressive Scan CMOS
Lens:	2.8 - 12mm, @ F1.6; Motorized VF Lens Angle of View: 105° - 32.1°
Min. Illumination:	0.1 Lux / F1.2 with AGC on 0 Lux with IR
IR Range:	Up to 30 Meters
Auto Iris:	DC Drive
Shutter Time:	1s to 1/100,000s
Day/Night:	ICR (Auto/Schedule /Alarm Trigger)
Wide Dynamic Range:	Yes, 120dB



Unit: mm

COMPRESSION STANDARD

Video Compression:	H.264/MJPEG/MPEG4
Bit Rate:	32 Kbps - 16 Mbps
Dual Stream:	Yes



IMAGE

Max. Image Resolution:	2048(H) x 1536(V)
Frame Rate:	20 fps (2048 x 1536) 30 fps (1920 x 1080) 30fps (1600 x 1200)

FUNCTIONS

Alarm Triggers:	Motion, Intrusion, Defocus, and Face Detection, Network Disconnect, IP Address Conflict, Storage Exception, Tampering Alarm, Dynamic Analysis
Local Storage:	Built-in SD/SDHC/SDXC Card slot, up to 64GB
Security:	User Authentication, Watermark
Protocols:	TCP/IP, HTTP, DHCP, DNS, DDNS, NTP, RTP, RTSP, PPPoE, SMTP, NTP, SNMP, HTTPS, FTP, 802.1x, QoS
System Compatibility:	ONVIF, PSIA, CGI

PHYSICAL

Operating Conditions:	-30°C - 60°C (-22°F - 140°F); Humidity 90% or Less (non-condensing)
Impact Protection:	IEC60068-275Eh, 50J, EN50102, up to IK10
Dimensions (mm):	5.51" (Dia.) x 4.80" (H) 140mm (Dia.) x 114mm (H)
Weight:	3.09 lbs. / 1400 g

ELECTRICAL

Power Supply:	12 V DC ±10%; PoE (802.3af)
Power Consumption:	6.5 W 9.5 W with IR on (IR LEDs: +2 W, Motorized VF Lense +1 W)

INTERFACE

Audio Input:	1 - Channel Microphone Input, 3.5mm Mini-Jack
Audio Output:	1 - Channel 3.5mm Audio Interface (Line Level 600Ω)
Communication:	1 RJ45 10M/100M Ethernet Port and 1 RS-485
Alarm Input:	1
Alarm Output:	1
Video Output:	1 Vp-p Composite Output (75Ω /RCA)
Reset Button:	Yes

WARRANTY

Three (3) Year Return to Depot Parts and Labor Warranty

CERTIFICATIONS

FCC, CE

PART NUMBER

VX-3M-D2-RIAWD:	3MP Vandal-Resistant IP Dome Camera (WDR)
------------------------	---

RECOMMENDED MOUNTS

VX-WM-D2:	Wall Mount Adaptor
VX-PM-D2:	Pendant Mount Adaptor
VX-FM-D2:	Indoor Ceiling Flush-Mount Adaptor
VX-POLE:	Pole Mount Adaptor
VX-CM:	Corner Mount Adaptor
VX-WMJ-D2:	Wall Mount Adaptor with Junction Box