

VISIX VX-10M28(4)-DUAL-OD-IAW(-X)

10MP 2.8MM OR 4MM (X2) LENS FIXED DUAL IMAGER (2X5MP), DUAL DOME W/ IR, WDR, AUDIO AND ALARM



Key Features

- » 10MP (5MP x2 w/ 2592 x 1944 Max Res per Sensor)
- » Simultaneous Lens Operation (15fps Max)
- » Optional Edge-based Deep Learning Analytics (One Sensor Only)
- » 4 Year Warranty
- » NDAA Compliant
- » Edge Based Deep Learning Analytics:
 - » Object Classification (Person, Vehicle, Object)
 - » Accurate in Dense and Busy Scenes
- » Integrates with:
 - » VIGIL - Dwell Time/People Counting Advanced Reporting
 - » VIGIL Trends and VIGIL CLOUD (via VIGIL Server)

PRODUCT NUMBERS

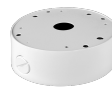
Available Units	Description
VX-10M28-DUAL-OD-IAW	Base Camera - 10MP 2.8mm (x2) Lens Fixed Dual Imager (2x5MP), Dual Dome w/ IR, WDR, Audio and Alarm
VX-10M4-DUAL-OD-IAW	Base Camera - 10MP 4mm (x2) Lens Fixed Dual Imager (2x5MP), Dual Dome w/ IR, WDR, Audio and Alarm
VX-10M28(4)-DUAL-OD-IAW-X	Base Camera + Edge-based Deep Learning Analytics License

*The -X deep learning analytics license can be added to a Base Camera at any time to unlock advanced analytics functionality. Speak to a 3xLOGIC Sales Associate for more info.

Available Mounts



VX-WM-BW08
Wall Mount



VX-JB-BJC09
Junction Bracket



VX-PM-BC08
Pendant Mount

Hardware			
Image Sensor	2x 1/2.8" 5.69M CMOS	Sensor Max Resolution	2592(H) X 1944(V) (per lens)
Lens	2.8mm or 4mm (model dependent)	Frame Rate	30fps (15FPS max if streaming from both lenses simultaneously)
Aperture	4mm: F2.0 2.8mm: F1.8	Operating Temperature	-20°~ 50°C (-4° ~ 122°F)
Lens Type	Fixed	Operating Humidity	10-90% RH (Non-Condensing)
Angle of View	2.8mm - D : 125.5°, H : 102.4°, V : 77.4° 4mm - D : 106.6°, H : 82.3°, V : 58.8°	Impact Protection	IK10
MIN. Illumination	COLOR: 2.8mm : 0.13Lux, etc : 0.16Lux BW: 0Lux with IR	IP Rating	IP67
IR Type / Distance	H2IRx2 / 60ft (18m)	Material	Aluminum-Die Casting
Shutter Speed	Auto / Manual (1/15 ~ 1/32000) Anti-Flicker Slow Shutter (1/2,1/3,1/5,1/6,1/7.5, 1/10)	Dimensions (W x D x H)	139mm x79.5mm
Day & Night	TDN (True Day & Night)	Weight	0.68kg
Wide Dynamic Range (WDR)	120dB or above	Certifications	FCC Part 15, Subpart B, Class A. CAN ICES-3 (A)/NMB-3(A). UL and ULC Safety CE NDAA Compliant, KC, RoHS
Video Output	1 [CVBS 1.0V p-p (75Ω)]	Power Supply	Adaptor is not included DC12V, PoE IEEE 802.3af Class3
Ethernet	RJ45 (10/100Base-T)	Power Consumption	DC Max 9.9W PoE Max 11.6W
Internal Mic	Yes	Alarm In / Out	1 Line/1 Line
Audio In / Out	Mic /1 Line	Audio Compression	G.711 ulaw

Software			
Video Compression	H.265, H.264, MJPEG	Event Trigger	Motion Alarm, Network Disconnection Temperature Critical, Illegal Login, Schedule, Sensor Detection
Video BitRate	100Kbps~25Mbps	Security	HTTPS(SSL), IP filtering, 802.1x, Digest Authentication
Auto Gain Control (AGC)	Auto	Digital Noise Reduction	3D DNR
Video Streams	Dual Triple Streaming(3rd Stream Only MJPEG, 3 streams per lens) H.265 / H.264 : 2592x1944 /2560x1440 /1920x1080 /1280x720 /800x600 /704x576 /704x480 /640x480 /640x360 /352x288 /352x240(per lens) MJPEG : 1920x1080 / 1280x720 / 800x600 / 768x432 /704x576 /704x480 /640x480 /640x360 /352x288 /352x240 (per lens)	Protocols	TCP/IP, UDP, Auto IP, RTP(UDP/TCP), RTSP, NTP, HTTP, HTTPS, SSL, DNS, DDNS, DHCP, FTP, SMTP, ICMP, SNMPv1/v2/v3(MIB-2), ONVIF
Base Analytics	Presence Filters (Advanced Motion), Object Tracker	Sys. Compatibility	CGI API, ONVIF Profile S

Dimensional Drawing

